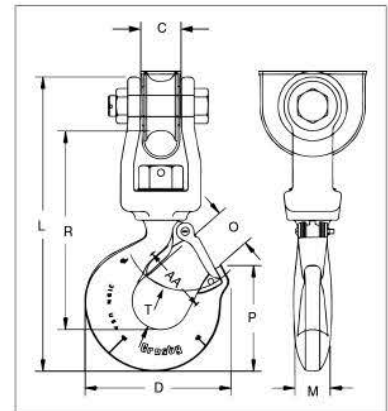




S-3319



- Designed for utility applications using synthetic rope.
- Suitable for positioning before lifting.
- Hook is forged alloy steel, Quenched & Tempered.
- Design of hook provides needed overhaul weight.
- Utilizes spool & shield designed to protect rope and keep rope positioned correctly on spool.
- Spool provides wider rope bearing surface resulting in an increased area for load distribution and reduces rope abrasion.



APPLICATION AND WARNING INFORMATION SECTION 17

S-3319 Utility Swivel Hook

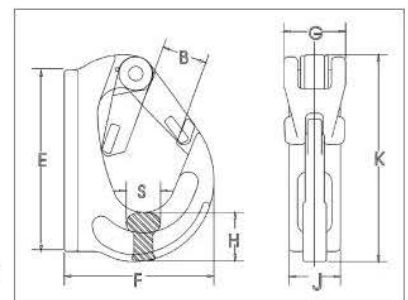
Working Load Limit (t)	Stock No.	Weight Each (kg)	Hook ID Code	Synthetic Rope Size (mm)	Dimensions (mm)									Replacement Latch Kit Stock No.
					C	D	L	M	O	P	R	T	AA*	
1.63	1002054	1.90	HA	14 - 16	27.7	101	222	23.9	29.5	70.6	151	29.5	2.00	1096468
2.50	1002063	3.62	IA	19 - 21	33.2	123	268	30.2	35.8	88.1	179	38.9	2.50	1096515
4.50	1002072	6.80	JA	22 - 27	45.2	160	324	36.6	45.2	117	221	49.3	3.00	1096562

5:1 Design Factor. Maximum allowable proof load is 2 times the Working Load Limit. * Deformation indicators.

BH-313



- Wide range of sizes available: 1-10 metric ton capacity.
- Forged alloy steel.
- Designed for attachment to mobile lifting equipment to provide a pick point for easy sling attachment.
- Large weld pad.
- Heavy duty latch interlocks with the hook tip. Replacement latches are available.
- Detailed installation and application instructions included with each hook.



BH-313 Weld-On Hooks

Working Load Limit (t)	Stock No.	Weight Each (kg)	Dimensions (mm)								Replacement Latch Stock No.
			B	E	F	G	H	J	K	S	
1	1029105	.52	23.1	97.0	71.0	36.1	26.9	25.9	107	18.0	1092104
2	1029114	.84	23.1	82.0	91.0	36.1	24.9	34.0	115	21.1	1092104
3	1029123	1.18	29.0	117	105	36.1	31.0	36.1	131	23.9	1092104
4	1029132	1.90	34.0	131	114	46.0	36.1	42.9	147	29.0	1092105
5	1029141	2.55	34.0	161	133	47.0	45.0	43.9	173	29.0	1092105
8	1029150	3.30	35.1	166	135	47.0	52.0	52.0	178	39.1	1092105
10	1029169	5.00	49.0	205	168	47.0	57.0	54.0	222	39.1	1092106

5:1 Design Factor.

HOOKS & SWIVELS

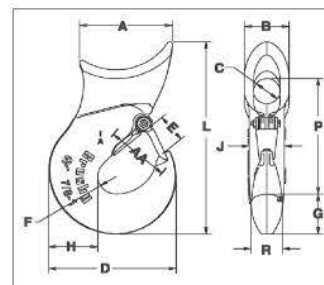


HOOKS & SWIVELS

A-350L



- New style incorporates throat opening equal to or larger than old style hooks.
- Each product has a Product Identification Code (PIC) for material traceability, along with a Working Load Limit, and the name Crosby or "CG" forged into it.
- All hooks incorporate Crosby's patented QUIC-CHECK® deformation indicators to help in determining if throat opening dimension has changed.
- Each hook is equipped with a Crosby S-4320 heavy duty stamped latch with the high cycle, long life spring.
- Forged alloy steel, Quenched & Tempered.



4

A-350L Sliding Choker Hook



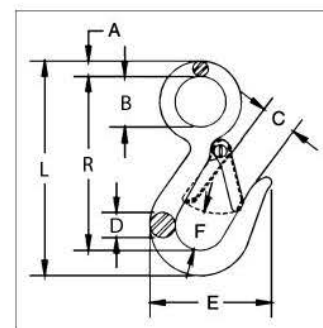
Single Part Rope Size (in. - mm)	Eight Part Rope Size (mm)	Stock No.	WLL (t)	Weight Each (kg)	Dimensions (mm)													Hook Frame Code	Replacement Latch Kit Stock No.
					A	B	C	D	E	F	G	H	L	P	R	AA*			
3/8 - 10	-	1011802	1.13	.35	52.5	28.7	16.0	61.0	16.0	9.65	21.3	23.1	109	66.0	16.0	38.1	DA	1096325	
1/2 - 13	3	1011811	1.50	.54	57.0	33.3	19.1	75.5	19.8	12.7	24.6	26.9	126	78.5	19.1	38.1	FA	1096374	
† 5/8 - 16	-	1011820	2.27	1.31	77.5	41.4	19.1	90.5	23.9	14.2	28.7	33.3	162	98.5	25.4	50.8	GA	1096421	
† 5/8 - 16	4	1011839	2.27	1.22	77.5	41.4	25.4	90.5	23.9	14.2	28.7	33.3	162	102	28.7	50.8	GA	1096421	
† 3/4 - 20	-	1011848	3.63	2.35	86.0	54.0	25.4	108	29.5	16.0	36.6	41.4	195	116	28.7	63.5	HA	1096468	
† 3/4 - 20	6-7	1011857	3.63	2.27	86.0	54.0	36.6	108	29.5	16.0	36.6	41.4	195	121	28.7	63.5	HA	1096468	
†† 7/8-1 - 22-25	-	1028177	6.75	4.40	112	53.8	31.8	154	35.8	22.4	51.0	59.2	243	145	38.1	76.2	IA	1096515	

*Deformation indicators. †Determine eye diameter "C" before ordering. ††22-25mm is cast steel.

G-3315



- Forged carbon steel, Quenched & Tempered.
- Pressed steel latches and stainless steel springs, bolts and nuts.
- For replacement latch kit, order Stock No. 9900299.
- Hook body - galvanized.
- Do not attach slings or other devices in hook for overhead lifting.



G-3315 Snap Hook



Hook Size (mm)	Stock No.	Working Load Limit (t)	Weight Each (kg)	Dimensions (mm)							
				A	B	C	D	E	F	L	R
12	1023056	.34	.11	6.35	19.1	19.1	11.2	57.0	19.1	100	82.5
14	1023074	.45	.22	8.65	28.4	20.6	14.2	68.5	22.4	120	97.5

4:1 Design Factor.



HOOKS & SWIVELS



S-377

- Forged carbon steel, Quenched & Tempered.
- The resultant load on each hook cannot exceed 0.5t.
- Meets the performance requirements of Federal Specification RR-C-271G, Type V, Class 6, except for those provisions required of the contractor.



S-377 Barrel Hooks

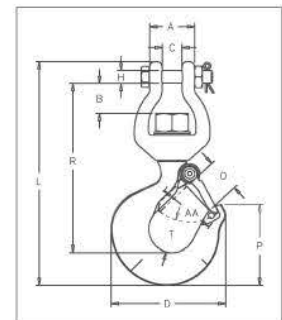
Working Load Limit Per Pair (t)	Stock No. Per Pair	Weight Each Per Pair (kg)	Dimensions (mm)			
			I.D. of Eye	O.D. of Eye	Overall Length	Width of Lip
1.0	1028248	1.61	39.6	71.4	127	73.2

4:1 Design Factor.



S-3316

- Easily attaches to any chain and electric hoist with welded link load chain, roller chain or wire rope with suitable end fitting.
- Swivel jaw is forged.
- Suitable for positioning before lifting.



APPLICATION AND WARNING INFORMATION SECTION 17



S-3316 Replacement Hook

Working Load Limit (t)	Frame Code	Stock No.	Weight Each (kg)	Dimensions (mm)											Replacement Latch Kit Stock No.
				A	B	C	D	H	L	O	P	R	T	AA	
.5	F	1023029	.57	33.5	17.8	14.2	80.0	9.7	159	24.4	56.4	120	25.1	50.8	1096374
1	H	1023047	1.18	33.5	25.4	17.0	101	11.2	197	29.5	70.6	150	29.5	50.8	1096468

5:1 Design Factor.



A-378

- Forged alloy steel, Quenched & Tempered.
- Deep straight throat permits efficient handling of flat plates or large cylindrical shapes.



A-378 with Handle

A-378 Sorting Hook



Working Load Limit at tip of Hook (t)	Working Load Limit at bottom of Hook (t)	Stock No	Style	Weight Each (kg)	Dimensions (mm)			
					I.D. of Eye	Overall Length	Opening at top of Hook	Radius at bottom of Hook
1.8	6.8	1028024	No Handle	2.91	35.0	246	71.4	15.9
1.8	6.8	1028033	With Handle	2.91	35.0	246	71.4	15.9

4:1 Design Factor.